

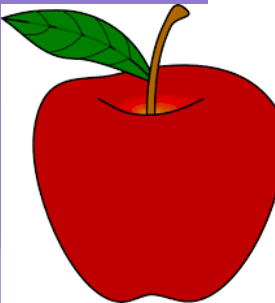
## Provisional Timetable (Subject to change)

	9.00-9.30	9.30-10.00	10.00-10.45	10.45-11.15	11.15-11.45	11.45-11.55	11.55-1.30	1.30-2.30	2.30-3.00	3.00-3.30
<b>M</b> <b>o</b> <b>n</b>	Communication time Register	Magic Breakfast	Interactive floor Sensory room	Outdoor Play and Self - Care	(11.10-11.45) Phonics	Act of Daily Worship	Lunch Self- Care	Topic Time (Pre reading/ writing skills) (ICT) EYFS Rainbow room	Self- Care	Assembly 2.50pm
<b>T</b> <b>u</b> <b>e</b> <b>s</b>	Communication time Register	Magic Breakfast	Café		Shopping			Physical PE/ Sherborne (Join with Acorns) Inclusion		French Club (Join with Acorns) Inclusion
<b>W</b> <b>e</b> <b>d</b>	Communication time Register	Magic Breakfast	Topic Time (Pre reading/ writing skills) (ICT) EYFS Sensory room		Sherborne			Sensory Science Understanding the world		Resonance board
<b>T</b> <b>h</b> <b>u</b> <b>r</b> <b>s</b>	Communication time Register	Magic Breakfast	Forest schools		Sound bath BP/ DE sensory integration (SR)			Numbers Measurement Sensory room		Tac Pac
<b>F</b> <b>r</b> <b>i</b>	Communication time Register	Magic Breakfast	Write Dance		Number songs			Golden Time		Praise Assembly 2.50pm

The playground is shared between Acorn and Apple class. We do lots of activities outdoors, many resources relating to our topic encouraging independent exploration.

Alfreton Park Community Special School has our very own hydrotherapy pool...aren't we lucky! The pool will be opening hopefully in October so I will let you know at the end of term your swim days.

## Welcome to Apple Class



Wingfield Road  
Alfreton  
Derbyshire  
De55 7AL  
Tel: 01773 832019  
Web: [www.alfretonpark.derbyshire.sch.uk](http://www.alfretonpark.derbyshire.sch.uk)

In Apple class we like to play with lots of different toys and sensory materials relating to our topic. We also love to get messy 😊

## Meet the team

Hello,

We are the Apple class team and we are really looking forward to joining us!

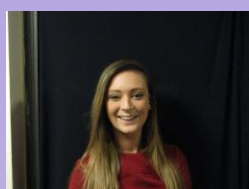


My name is Marie. I am the class teacher. I enjoy forest school activities and I am looking forward to us having lots of fun together! 😊



My name is Liz. I am a teaching assistant in Apple. You will see me on Thursday and Friday. I enjoy sensory activities, nice and relaxing. 😊

My name is Belle. I am an apprentice teaching assistant in Apple. You will see me every day. I like to explore the outdoors, hope you do too. 😊



My name is Jenny. I am a midday supervisor in Apple. You will see me every day and I will help you at dinnertime 😊. You will also see me on a Tuesday morning for community and Friday afternoon Golden time.



My name is Bev. I am a midday supervisor in Apple. You will see me every day and I will help you at dinnertime 😊.



My name is Emma. I am a teaching assistant in Apple. You will see me on Monday, Tuesday and Wednesday. I like to get messy, do you?

My name is Amy. I am a teaching assistant in Apple. You will see me every day 😊



## What you will need in Apple class

### Kit List

- PE kit: Shorts, T-shirt, pumps/trainers
- Swimming kit: Towel, Costume/Shorts/Trunks and swim pads if you need to use them.
- Toiletries: Pull ups/nappies, wipes, toothbrush, toothpaste and any creams (labeled) that we may need to use.
- Spare clothes: T-shirt, Jumper, Trousers, Socks (just in case you get wet or dirty)
- Water proof trousers and coat. Wellies as the rain does not stop us from going outside.

**PLEASE HELP US BY CLEARLY MARKING YOUR CHILD'S CLOTHING AND OTHER ITEMS WITH THEIR NAMES OR INITIALS.**

From time to time we may ask for additional kit items if we plan to do different exciting activities, we will write this in your child's home/school diary.

### Community and Cookery Money

Community and cookery money will be £2.50 per week, payable every Monday.

Please feel free to send in any equipment that your child needs. E.g. buggies, cups, dummies etc.